



germination – when a seed starts to grow



leaf

makes food for the plant
like a sugar factory



stem

supports leaves

transports water and
nutrients from roots

sends food down to the roots
and rest of plant

like a motorway



root

pulls water up

tiny hairs absorb water

roots anchor plant to the ground



All parts of a plant

have specific jobs

connected to each
other

essential for survival

photosynthesis

process of making food
(inside the sugar factory)



chlorophyll in the leaf absorbs light
to help make food

sunlight + water + carbon dioxide



makes sugar (glucose) + oxygen

transpiration

process of water moving
upwards from
roots

up the stem

to the leaves and
out into the air

like a tanker driving
up the motorway (stem)



soil

roots draw **water** and
nutrients from soil

plants do NOT eat soil



helps plant **anchor**
to the ground

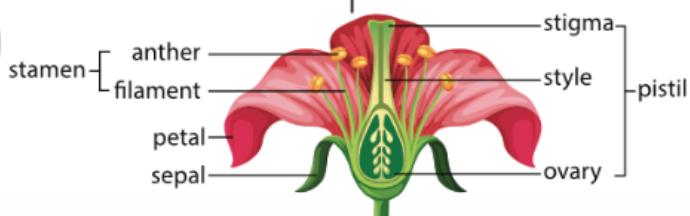


flower

purpose is to **attract insects**

cause **pollination**

to make **seeds**



pollination

The **transfer** of **pollen** to create **seeds** so a
plant can **reproduce**.

